

長者社區照顧服務券計劃
Community Care Service Voucher Scheme
for the Elderly



服務內容 Service Content

服務中心 Service Centre	日間護理中心 Day Care Centre	家居照顧服務 Home Care Service	住宿暫託 Residential Respite
長亨服務中心 Cheung Hang Service Centre	✗	✓	✓
利富服務中心 Lee Foo Service Centre	✓	✓	✓
愛東服務中心 Oi Tung Service Centre	✗	✓	✗

日間護理中心或家居照顧服務，包括：Day Care Centre or Home Care Service include:

- 照顧管理 Care management
- 基本及特別護理 Basic and special nursing care
- 復康運動 Rehabilitation exercise
- 個人照顧 Personal care
- 膳食服務 Meals
- 家居服務 Home-making
- 交通 ** / 護送 Transportation** / escort
- 長者看顧 Elderly sitting
- 租借輔助科技產品
Rental service of assistive technology products
- 照顧者培訓 Carer training
- 照顧者支援 Carer support
- 輔導及轉介 Counselling and referral
- 言語治療 Speech Therapy
- 家居環境安全評估及改善建議
Environmental risk assessment and home modifications recommendation

** 只適用於日間護理中心
Day Care Centre only



使命 Mission

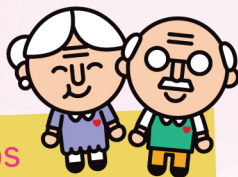
香港家庭福利會基於「以家為本」的信念，致力提供高質素的專業社會服務，為香港的家庭及大眾謀福祉，培育一個互相關顧的社會。

With a "family-centric" perspective, we are committed to delivering quality and professional social services to enhance the wellbeing of families and individuals in Hong Kong and foster a caring community.

服務宗旨 Service Objectives

為長者提供優質的日間照顧及家居服務，讓他們可繼續留在社區復康及安老，並為家人及照顧者提供支援。

To provide quality day care and home care services for elders, to help them maintain daily functioning and stay in the community, and to provide support for the family and carers.



服務對象 Target Groups

在「安老服務統一評估機制」下被評為適合社區照顧服務或院舍照顧服務，並正在資助長期護理服務中央輪候冊（中央輪候冊）輪候資助社區照顧服務及/或院舍照顧服務，而尚未接受任何院舍照顧服務或資助社區照顧服務的長者。

Elderly persons who have been assessed and recommended for Community Care Services (CCS) or Residential Care Services (RCS) under the Standardized Care Need Assessment Mechanism for Elderly Services, and are waitlisting for subsidized CCS and/or RCS on the Central Waiting List (CWL) for Subsidized Long Term Care (LTC) Services without any kind of RCS or subsidized CCS being received.

申請方法 Application Method

1. 社署會直接邀請中央輪候冊上合資格長者參與計劃。合資格長者亦可向社署遞交申請。

SWD will send invitation directly to eligible persons on the CWL. Eligible persons can also submit application to SWD.

2. 社區券持有人可致電或親臨中心登記，或經負責工作人員轉介。

Voucher holder may contact centres by phone or in person, or approach their Responsible Workers (RW) for service referral.

如需任何協助，請與其負責工作人員或社署社區照顧服務券辦事處聯絡。

In case assistance is required, they may approach their RW or Community Care Service Voucher Office.

服務收費 Service Fee

社署會按長者的家庭住戶收入，以釐定共同付款級別。

SWD determines the co-payment category according to the family household income.

可按需要購買額外服務。


May purchase extra services at own resources.

終止服務 Service Termination

1. 服務使用者可自行要求終止服務。
Upon request from service users.
2. 根據機構政策及由個案經理作出評估，若認為服務不宜再繼續，可要求服務使用者退出服務。
According to agency policy and case manager's assessment, the service if found no longer suitable to be continued.



認可服務單位 Recognised Service Providers

長亨服務中心  2436 9090
Cheung Hang Service Centre
新界青衣長亨邨亨業樓地下 A 翼
Wing A, G/F., Hang Yip House, Cheung Hang Estate,
Tsing Yi, New Territories

利富服務中心  2174 7737
Lee Foo Service Centre
九龍順利邨利富樓 3 樓 (平台) 23 號
Unit 23, F3 (Podium Floor), Lee Foo House,
Shun Lee Estate, Kowloon

愛東服務中心  2564 7556
Oi Tung Service Centre
香港筲箕灣愛東邨愛善樓 1 樓 101 室
Unit 101, 1/F, Oi Sin House,
Oi Tung Estate, Shau Kei Kwan, Hong Kong